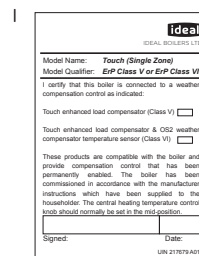
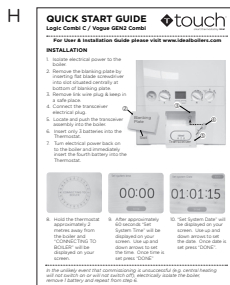
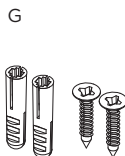
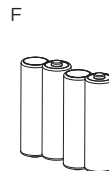
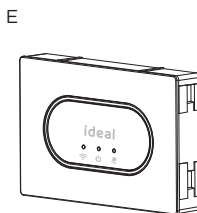
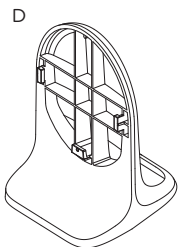
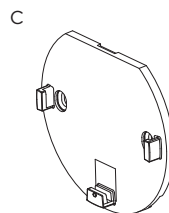
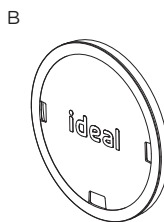
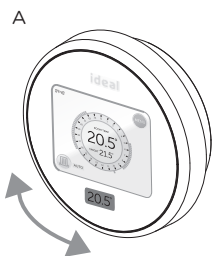


Class V when used in isolation. **Class VI** when used with an outside sensor, **Class VIII** when used with more than 2 zones.
Contribution to seasonal space heating energy efficiency 3% (**Class V**), 4% (**Class VI**), 5% (**Class VIII**).

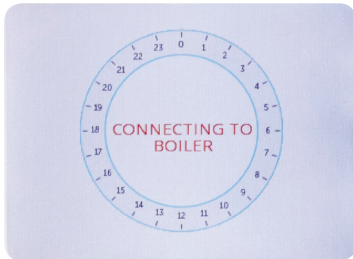
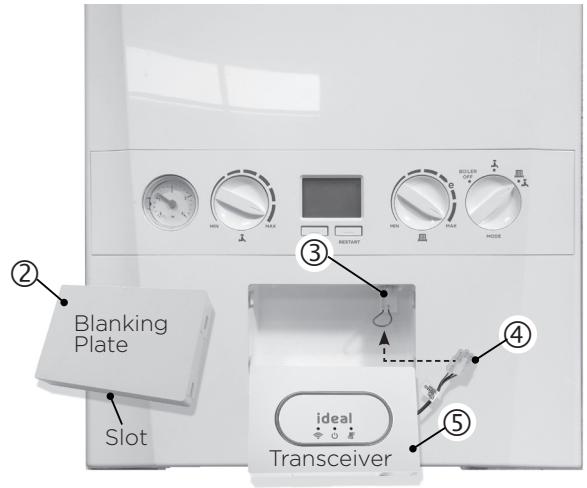
CONTENTS

- A. Touch Thermostat
- B. Mounting Bracket Cover
- C. Mounting Bracket
- D. Desktop stand
- E. Transceiver
- F. Batteries (AA)
- G. Screws & Plugs
- H. Quick Start Guide
- I. SAP Registration Label

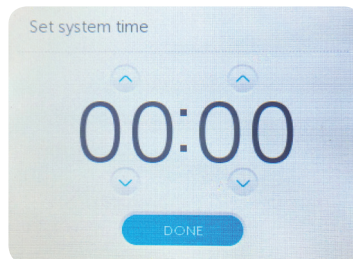


INSTALLATION

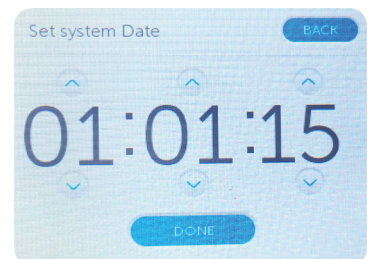
1. Isolate electrical power to the boiler.
2. Remove the blanking plate by inserting flat blade screwdriver into slot situated centrally at bottom of blanking plate.
3. Remove link wire plug & keep in a safe place.
4. Connect the transceiver electrical plug.
5. Locate and push the transceiver assembly into the boiler.
6. Insert only 3 batteries into the Thermostat (noting correct polarity).
7. Turn electrical power back on to the boiler and immediately insert the fourth battery into the Thermostat.



8. Hold the thermostat approximately 2 metres away from the boiler and "CONNECTING TO BOILER" will be displayed on your screen.



9. After approximately 60 seconds "Set System Time" will be displayed on your screen. Use up and down arrows to set the time. Once time is set press "DONE"



10. "Set System Date" will be displayed on your screen. Use up and down arrows to set the date. Once date is set press "DONE".

In the unlikely event that commissioning is unsuccessful (e.g. central heating will not switch on or will not switch off), electrically isolate the boiler, remove 1 battery and repeat from step 6.

LOCATION GUIDELINES

For correct wireless communication between your boiler and the Touch Thermostat there must be:

- Less than 20 metres
- No more than 2 walls and 1 ceiling
- No large metallic objects (e.g. American fridge/freezer)
- No large mirrors or windows
- No walls running along the RF path

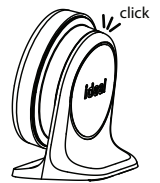
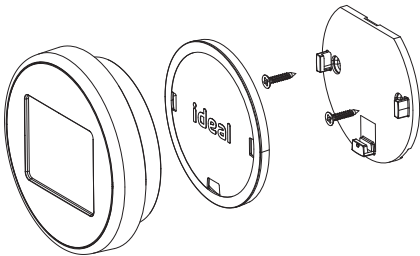
The Thermostat must not be within 1 metre of a WiFi booster / router

TO FIX THE THERMOSTAT

To fix the Thermostat:


- (a) Fix the wall bracket to the wall using appropriate fixings. Push the wall bracket cover into place until it clicks. Place the Thermostat onto the three lugs and slide the Thermostat down until it clicks.

- (b) Alternatively, the Thermostat can be placed on the desktop stand by placing it onto the three lugs and sliding it down until it clicks.



- (c) If applicable, complete the enclosed SAP Registration Label and adhere it to the boiler in a position which will be visible for future inspection.

TROUBLE SHOOTING

1	<p>Press the Thermostat screen. If screen does not illuminate then replace batteries.</p> <p>Battery Replacement:</p> <p>Un-clip the Thermostat from its cradle by sliding the Thermostat upwards.</p> <p>Using a flat bladed screwdriver pop off the rear cover.</p> <p>Replace batteries.</p> <p>Refit battery cover.</p> <p>Batteries should operate for approximately 18 to 24 months.</p> <p>Only good quality alkaline batteries are to be used.</p>	
2	<p>If warning triangle is shown then press it.</p> <p>If "Zone 1 Fault" shown refer to Location Guidelines (overleaf).</p> <p>If "Boiler Fault" shown, check boiler display and refer to boiler installation manual.</p>	
3	If Time / Day at top left of display is incorrect, change by pressing "Menu" > "Help & Settings".	
4	<p>If Central Heating will not switch on check Target Room Temperature is at least 1°C greater than Actual Room Temperature. If not press radiator symbol at bottom left of screen until "On" is highlighted then rotate outer ring clockwise.</p> <p>If Central Heating will not switch off press radiator symbol until "Off" is highlighted.</p>	
5	Check power to boiler is on (boiler display should be on).	
6	If boiler transceiver left hand RF light is off, refer to Location Guidelines (opposite).	
7	<p>For Logic Combi C Boilers - ensure boiler Mode Knob is in Winter position.</p> <p>For Vogue Gen2 Combi Boilers - ensure Central Heating knob is fully clockwise.</p>	
8	If the fault persists then isolate the boiler, remove 1 Thermostat battery and repeat Quick Start Guide instructions from Step 6 (see "INSTALLATION").	
9	If the Touch Thermostat replaced an existing thermostat, ensure that boiler installer connection link wire is in place (see boiler manual).	



WEEE DIRECTIVE 2012/19/EC

Waste Electrical and Electronic Equipment Directive

- At the end of the product life, dispose of the packaging and product in a corresponding recycling centre.
- Do not dispose of the unit with the usual domestic refuse.
- Do not burn the product.
- Remove the batteries.
- Dispose of the batteries according to the local statutory requirements and not with the usual domestic refuse.